



Process Gauges

SOLFRUNT[®] 4-1/2" and 6" Receiver Gauges

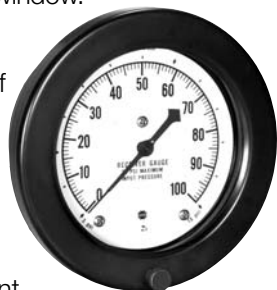
DESCRIPTION

This series of 4-1/2" and 6" receiver gauges is designed to meet general requirements of the process industry, providing remote or local indication.

Both the aluminum and phenolic case designs available in this series are constructed with an integral partition between the measuring element and the window. A pressure-relieving back is standard.

An accuracy of $\pm 0.5\%$ of the 12 psi span is provided by a wide phosphor bronze Bourdon tube and a movement of light durable parts.

An adjustable pointer permits front zero adjustment. Other calibration adjustments can be made by removing the pressure relieving back without removing the internals from the case.



SPECIFICATIONS

DIAL SIZE: 4-1/2": 1362, 1365, 1367; 6": 1362, 1365

CASE:

1362: SOLFRUNT die cast aluminum case with back flange for wall or stem mounting. Black finish. 4-1/2" size has polypropylene pressure relieving back; 6" size has Nitrile pressure relieving back

1365: SOLFRUNT die cast aluminum case with front flange for panel mounting. Black finish. 4-1/2" size has aluminum pressure relieving back; 6" size has Nitrile pressure relieving back

1367: SOLFRUNT PET turret case (black) with polypropylene pressure relieving back. Available in 4-1/2" size only

RING:

1362 4-1/2": Aluminum bayonet lock, black finish

1362 6": Aluminum, threaded, black finish

1365 4-1/2" and 6": steel, hinged, black finish

1367 4-1/2" only: polypropylene, snap-in, black

WINDOW: 1362 and 1365: acrylic with neoprene gasket; 1367: acrylic

POINTER: Knife-edged, adjustable, black finish

DIAL: Aluminum, white background with black markings. Outer scale marked 3 to 15 psi. Inner scale marked in terms of process variable

MOVEMENT: Geared ARC-LOC[®] with parts of phosphor bronze and stainless steel to reduce friction and wear. Minimum stop and spring loaded slotted link allow stopping the pointer at 3 psi, while permitting the Bourdon to return to its unstressed position at 0 psi

BOURDON TUBE: Phosphor bronze, silver brazed

CONNECTION: 1/4-18 ANPT brass

ACCURACY: $\pm 0.5\%$ of span, ± 0.06 psi (Grade 2A)

DEAD BAND: 0.5% of span, .06 psi

General Information About Receiver Gauges

U.S. Gauge receiver gauges are specifically designed for use with pneumatic transmission of process variables. A wide variety of transmitters is available to convert flow, temperature, differential pressure, level, etc., into a proportional air pressure signal. The most commonly used transmission range is 3 to 15 psi. Transmitters are arranged so that the lowest value of the variable to be measured creates a 3 psi pressure, and the highest value creates a 15 psi pressure. These pressures may be indicated locally or remotely by a pressure gauge having a dial calibrated in terms of the variable being measured. Called Receiver Gauges, these gauges generally provide a graduation arc of 270° for a pressure change of 3 psi to 15 psi; or a span of 12 psi.

If the gauge is to be used for "tuning" the process, accuracy and deadband are of prime importance. Accuracy is conformity of a pressure gauge indication to an accepted standard or "true" indication. Dead band is the range through which the input can be varied without indicating pointer motion. Both accuracy and dead band are expressed in "percent of span."

If the gauge is to be used simply to give an indication of the transmitted pressure or process variable, a smaller, less accurate gauge is sufficient.

The receiver gauges offered in this catalog provide a wide selection, ranging

in accuracy from $\pm 0.5\%$ and a deadband of 0.5%, to general purpose gauges having an accuracy of $\pm 1\%$.

Standard operating ranges are 3 to 15 psi. Other ranges are available, but are not stock items.

From a safety standpoint it is important to note that receiver gauges may have dials calibrated in any unit, e.g. 0 to 1000 psi. However, regardless of the nomenclature on the dial, the maximum normal operating pressure is 15 psi, and severe overpressure can cause the pressure element to burst with possible catastrophic results.

For the purpose of warning the user against applying excessive pressure to the gauge, most receiver gauges described in this catalog have the following notice on the dial:

RECEIVER GAUGE 25 PSI MAXIMUM INPUT PRESSURE

While 25 psi will not cause the pressure element to burst, it will cause a calibration shift.

© 2006, by AMETEK, Inc. All rights reserved. PDF606 (160126) Specifications are subject to change without notice. Visit our Web sites for the most up-to-date information.



For Gauges/Thermometers:

U.S. GAUGE
820 Pennsylvania Blvd.
Feasterville, PA 19053 U.S.A.
Tel: (215) 355-6900
Fax: (215) 354-1802
www.ametekusg.com

Customer Service Tel: (863) 534-1504
Customer Service Fax: (863) 533-7465

For Electronic Products:

PMT PRODUCTS
820 Pennsylvania Blvd.
Feasterville, PA 19053 U.S.A.
Tel: (215) 355-6900
Fax: (215) 354-1800
www.ametekusg.com

For Diaphragm Seals:

M&G PRODUCTS
8600 Somerset Drive
Largo, FL 33773 U.S.A.
Tel: (727) 536-7831
Fax: (727) 539-6882
www.ametek.com/tci

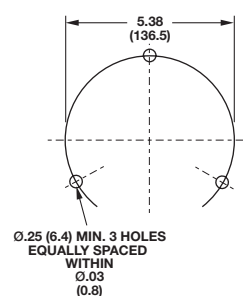
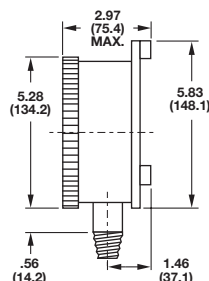
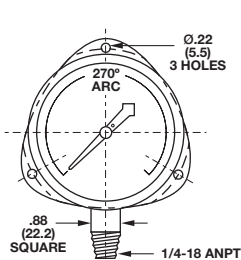




Process Gauges

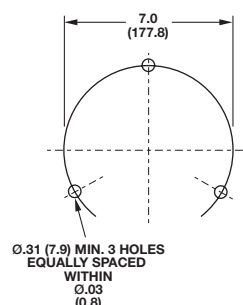
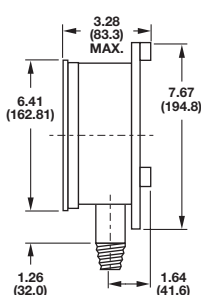
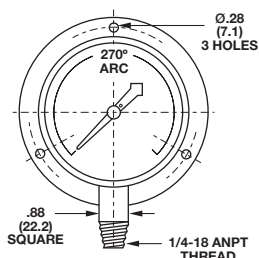
SOLFRUNT® 4-1/2" and 6" Receiver Gauges

Model 1362
(4-1/2" Dial Size)

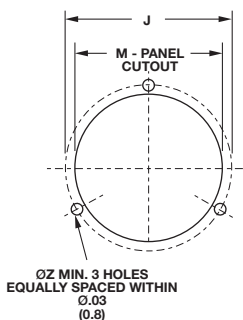
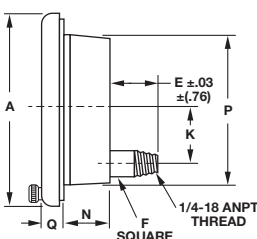
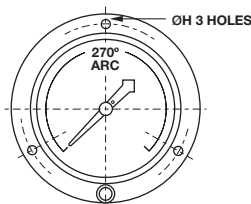


INCHES
(MM)

Model 1362
(6" Dial Size)

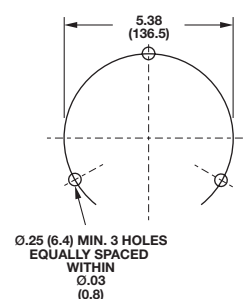
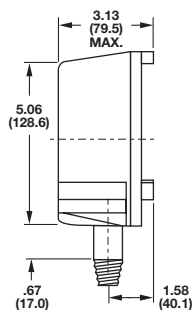
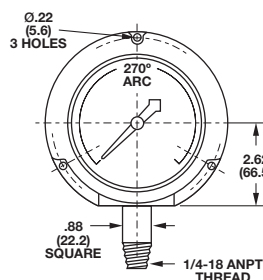


Model 1365



DIAL SIZE	UNIT	A	E	F	H	J	K	M	N	P	Q	Z
4-1/2"	inches	6.09	1.08	.88	.22	5.38	1.62	4.90	1.77	4.83	.67	.25
	mm	154.69	42.16	22.35	5.56	136.53	41.15	124.21	44.96	30.23	17.02	6.35
6"	inches	7.72	1.24	.88	.28	7.0	1.62	6.39	2.12	6.31	.64	.31
	mm	196.09	37.59	22.35	7.14	177.80	41.15	161.80	53.85	160.27	16.26	7.87

Model 1367



© 2006, by AMETEK, Inc. All rights reserved. PDF606 (160126) Specifications are subject to change without notice. Visit our Web sites for the most up-to-date information.

AMETEK®

ISO 9001:2000
CERTIFIED

For Gauges/Thermometers:

U.S. GAUGE
820 Pennsylvania Blvd.
Feasterville, PA 19053 U.S.A.
Tel: (215) 355-6900
Fax: (215) 354-1802
www.ametekusg.com
Customer Service Tel: (863) 534-1504
Customer Service Fax: (863) 533-7465

For Electronic Products:

PMT PRODUCTS
820 Pennsylvania Blvd.
Feasterville, PA 19053 U.S.A.
Tel: (215) 355-6900
Fax: (215) 354-1800
www.ametekusg.com

For Diaphragm Seals:

M&G PRODUCTS
8600 Somerset Drive
Largo, FL 33773 U.S.A.
Tel: (727) 536-7831
Fax: (727) 539-6882
www.ametek.com/tci



Process Gauges

General Purpose Receiver Gauges

DESCRIPTION

Offered in 2", 2-1/2", and 3-1/2" sizes for panel or stem mounting, these gauges are normally used for remote indication of process variables and not for tuning process controls. Inexpensive, and suitable for applications which do not demand better than 1% accuracy over the middle half of the scale.



SPECIFICATIONS

DIAL SIZE: 2", 2-1/2", 3-1/2"

CASE: Steel, black finish (back connected with U-clamp)

RING/WINDOW: Threaded, polycarbonate

WINDOW: 3-1/2": Acrylic, beveled

POINTER: Aluminum, black finish

DIAL: Steel, white background with black markings. Outer scale marked 3 to 15 psi. Inner scale marked in terms of process variable

MOVEMENT: Brass with minimum stop

BOURDON TUBE: Beryllium Copper

CONNECTION: 1/4-18 ANPT, brass

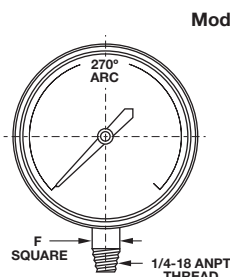
ACCURACY (Grade 1A):

±1% of span (.12 psi) over middle half of scale

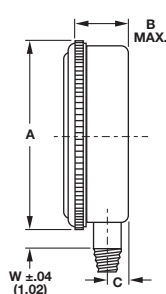
Balance of scale is ±2% of span (.24 psi)

Model 1370 (Low Mount)

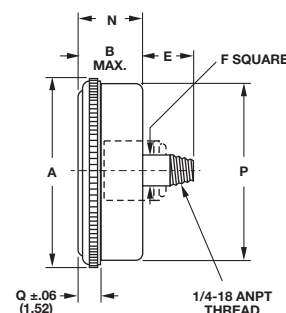
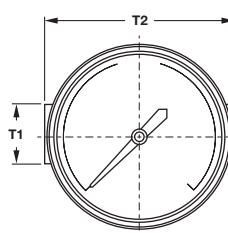
DIAL SIZE	UNIT	A	B	C	F	W
2"	inches	2.28	1.18	.41	.56	.24
	mm	56.64	30.48	9.91	14.22	6.60
2-1/2"	inches	2.83	1.22	.41	.56	.23
	mm	70.25	30.48	9.65	14.22	6.10
3-1/2"	inches	3.88	1.19	.38	.56	.44
	mm	98.30	26.54	9.91	14.22	11.18



Model 1370



INCHES
(MM)



Model 1370 (U-Clamp, Center-Back Mount)

DIAL SIZE	UNIT	A	B	E	F	N	P	Q	T1	T2
2"	inches	2.25	1.22	.78	.56	1.09	2.11	.24	.75	2.28
	mm	56.64	30.99	27.69	14.22	27.69	53.59	10.41	25.40	57.66
2-1/2"	inches	2.80	1.22	.77	.56	1.09	2.59	.30	.75	2.81
	mm	71.37	30.99	27.69	14.22	27.69	67.82	10.41	25.40	72.90
3-1/2"	inches	3.88	1.18	.78	.56	1.09	3.64	.29	.75	3.94
	mm	98.30	29.97	27.43	14.22	27.69	93.98	9.40	25.40	101.60

© 2006, by AMETEK, Inc. All rights reserved. PDF606 (160126) Specifications are subject to change without notice. Visit our Web sites for the most up-to-date information.

AMETEK[®]

ISO 9001:2000
CERTIFIED

For Gauges/Thermometers:

U.S. GAUGE
820 Pennsylvania Blvd.
Feasterville, PA 19053 U.S.A.
Tel: (215) 355-6900
Fax: (215) 354-1802
www.ametekusg.com
Customer Service Tel: (863) 534-1504
Customer Service Fax: (863) 533-7465

For Electronic Products:

PMT PRODUCTS
820 Pennsylvania Blvd.
Feasterville, PA 19053 U.S.A.
Tel: (215) 355-6900
Fax: (215) 354-1800
www.ametekusg.com

For Diaphragm Seals:

M&G PRODUCTS
8600 Somerset Drive
Largo, FL 33773 U.S.A.
Tel: (727) 536-7831
Fax: (727) 539-6882
www.ametek.com/tci



Process Gauges

General Purpose Receiver Gauges

SPEC NUMBER SELECTION CHART

Receiver Gauges				SURFACE OR STEM MOUNTED GAUGES		
	Model No. 1370 1/4-18 ANPT Low Mount			Model No. 1362 1/4-18 ANPT Low Mount		Model No. 1367 - Super Receiver 1/4-18 ANPT Low Mount
Bourdon Tube	Beryllium Copper			Phosphor Bronze		Phosphor Bronze
Connection	Brass	Brass	Brass	Brass	Brass	Brass
Size	2"	2-1/2"	3-1/2"	4-1/2"	6"	4-1/2"
Dial	Spec No.	Spec No.	Spec No.	Spec No.	Spec No.	Spec No.
0-100	35242	35245	75818	132270	132607	132361
0-10	-	-	75820	-	-	132362

FLUSH PANELBOARD MOUNTED GAUGES					
	Model No. 1370* 1/4-18 NPT Low Mount			Model No. 1365 1/4-18 NPT Low Mount	
Size	Beryllium Copper			Phosphor Bronze	-
Connection	Brass	Brass	Brass	Brass	-
Size	2"	2-1/2"	3-1/2"	4-1/2"	6"
Dial	Spec No.	Spec No.	Spec No.	Spec No.	Spec No.
0-100	35243	35244	75817	132270	-
0-10	-	-	75819	132271	-

* Suitable for stem mounting

© 2006, by AMETEK, Inc. All rights reserved. PDF606 (160126) Specifications are subject to change without notice. Visit our Web sites for the most up-to-date information.

AMETEK®

ISO 9001:2000
CERTIFIED

For Gauges/Thermometers:

U.S. GAUGE
820 Pennsylvania Blvd.
Feasterville, PA 19053 U.S.A.
Tel: (215) 355-6900
Fax: (215) 354-1802
www.ametekusg.com
Customer Service Tel: (863) 534-1504
Customer Service Fax: (863) 533-7465

For Electronic Products:

PMT PRODUCTS
820 Pennsylvania Blvd.
Feasterville, PA 19053 U.S.A.
Tel: (215) 355-6900
Fax: (215) 354-1800
www.ametekusg.com

For Diaphragm Seals:

M&G PRODUCTS
8600 Somerset Drive
Largo, FL 33773 U.S.A.
Tel: (727) 536-7831
Fax: (727) 539-6882
www.ametek.com/tci